

Chapter 8 CONSTRUCTION METHOD FOR STRUCTURAL STEEL SYSTEM

8.1 GENERAL CONSIDERATIONS

The priority during the construction is to minimise on-site construction and provide extensive prefabrication. Proper planning during design stage is required, with consideration of column and beam spacing for the following:

- Unpropped metal deck during concreting
- Hoisting of precast facade panel for external walls
- Ensure the steel member sizes are easy to hoist, manage and install on site

Other site constraints such as accessibility and limitations of hoisting equipment need to be considered. These constraints may subsequently affect the sequence of construction for the development.

8.2 SEQUENCE OF INSTALLATION



Figure 8.1 Erection of steel column and beams - Temporary bracing was required to ensure verticality of steel columns when bolt connections from beams to columns were tightened.



Figure 8.2 Bolted connection for column to beam with laying of metal decking for second storey and roof

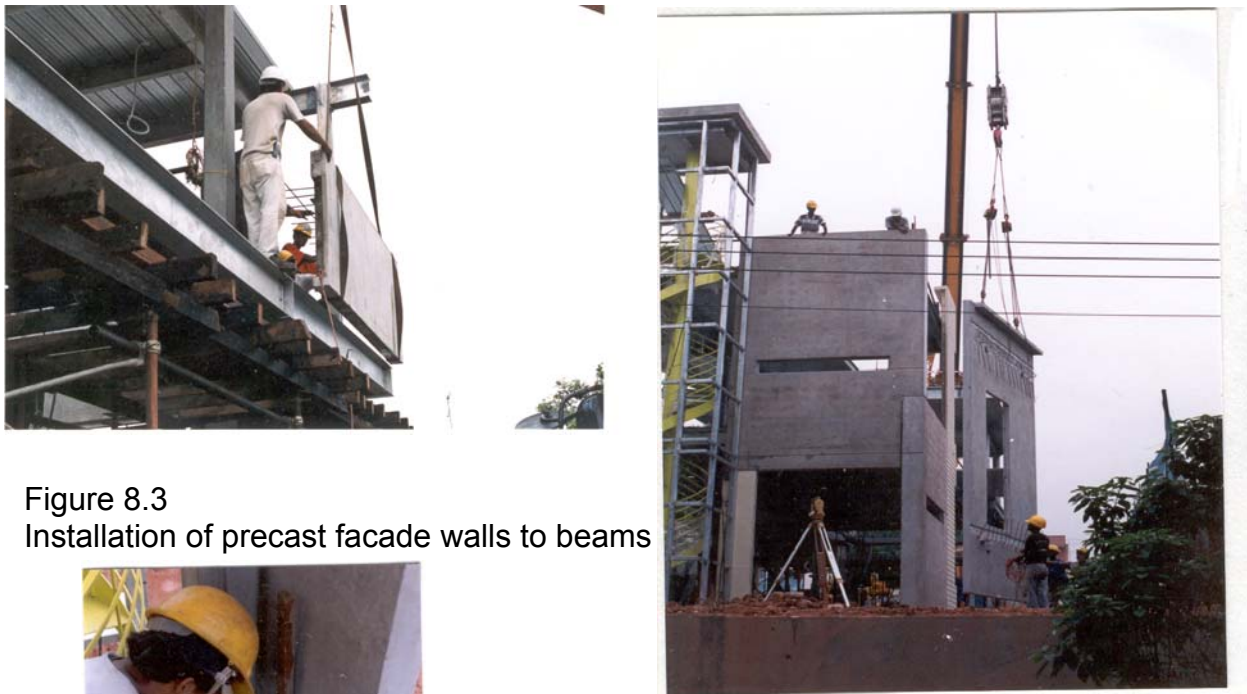


Figure 8.3 Installation of precast facade walls to beams



Figure 8.4 Fastening of connection