

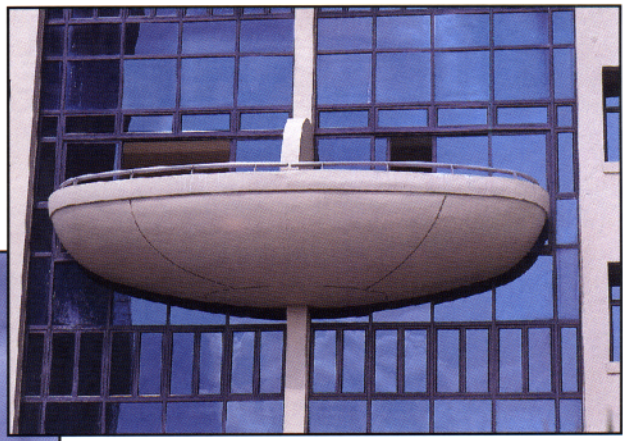
# ARCHITECTURAL COMPONENTS

## *Architectural Variety*

Architectural precast concrete is where creativity and variety can be expressed. Balconies, parapets, gable-end walls, facade walls and other elevation treatments can all be done with precast concrete. Unique shapes and designs and various finished effects (using tiles, granite, spray finish etc) can be achieved. The advantages of precast are higher consistency and quality.

Sizings and dimensions are usually custom made to the project. The only point to note is the need for repetition so as to be economical for production. Internal walls usually come in standard sizes, such as precast lightweight walls and precision blocks. Precision block walls require only 2 to 3 mm skim coat and do away with plastering. The following pages show some of these architectural components.

*Architectural Components*



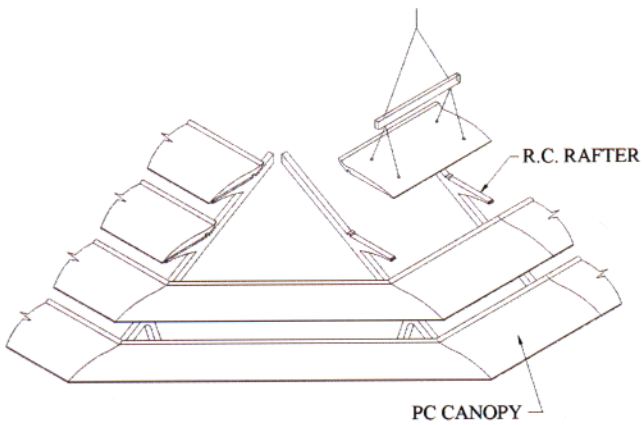
# Balcony



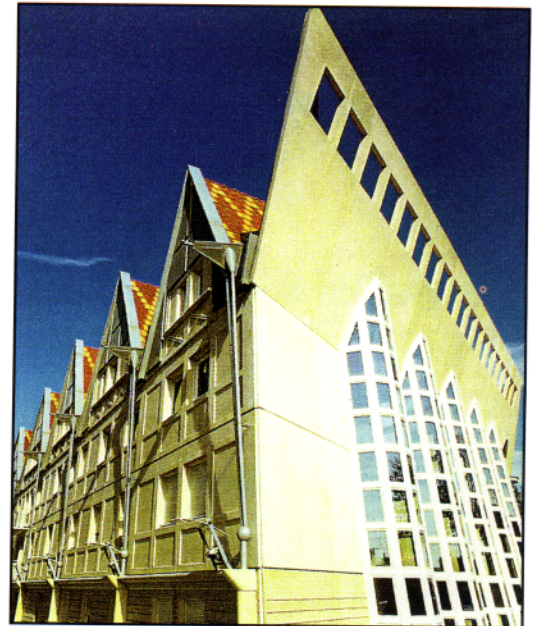
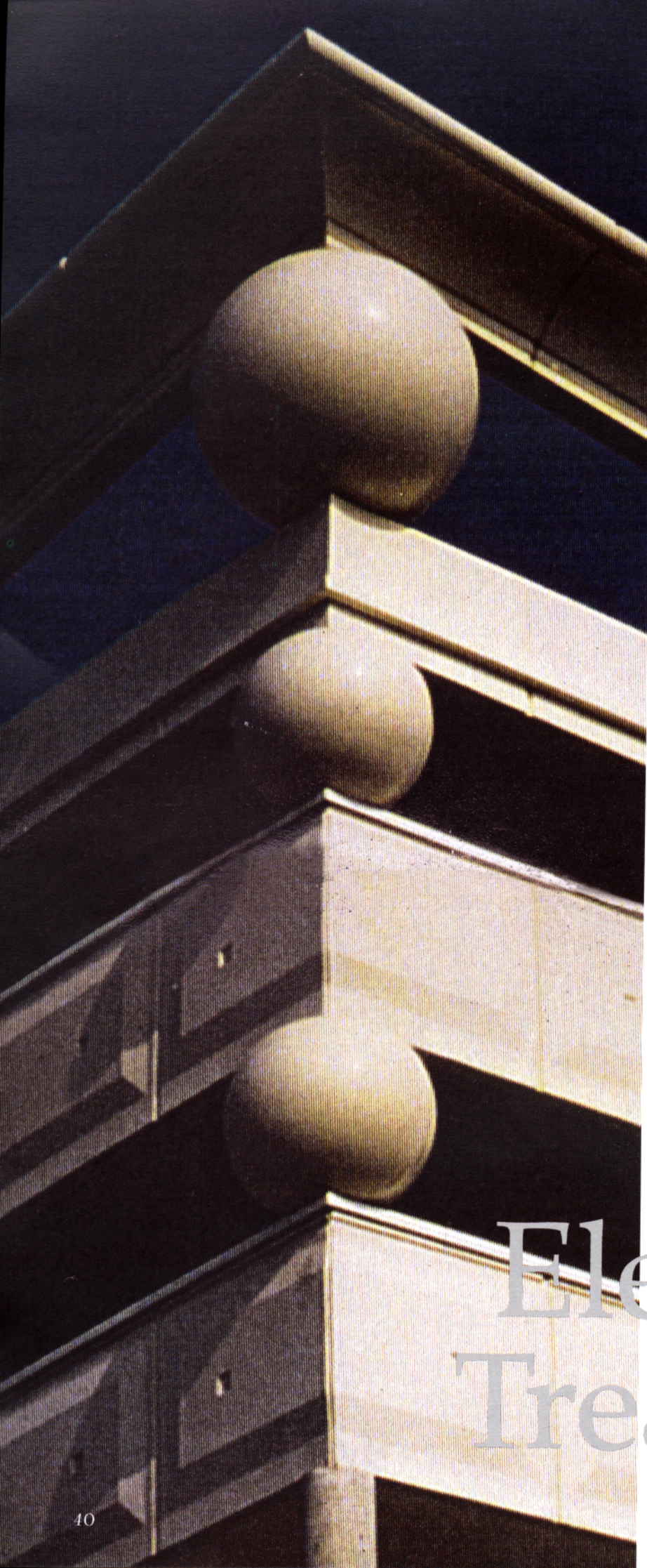


# Parapet





# Canopy

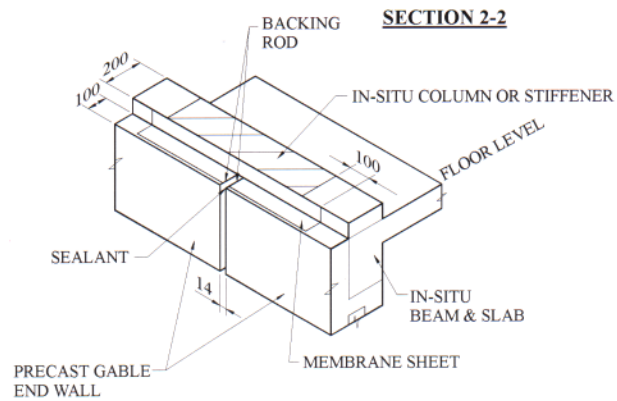
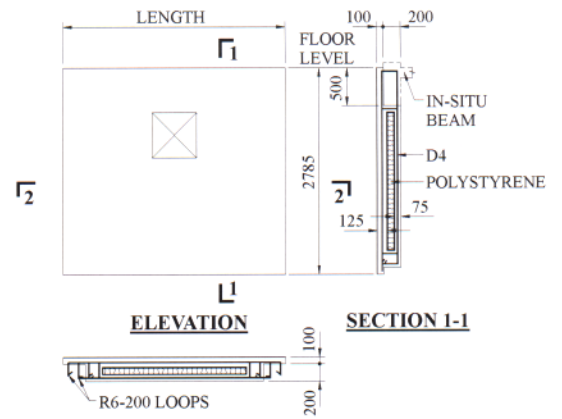
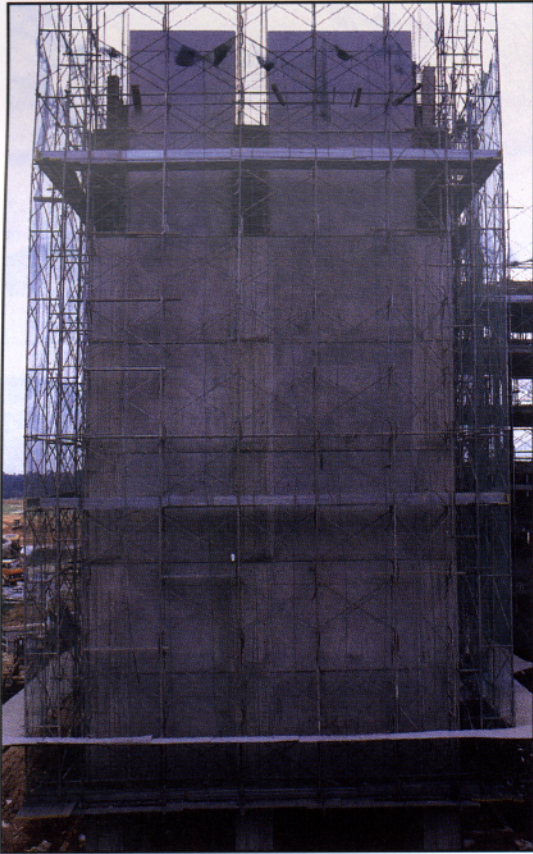


# Elevation Treatment



# Facade Wall





**ISOMETRIC VIEW SHOWING TYPICAL WATERPROOFING DETAIL FOR PRECAST GABLE END WALL**

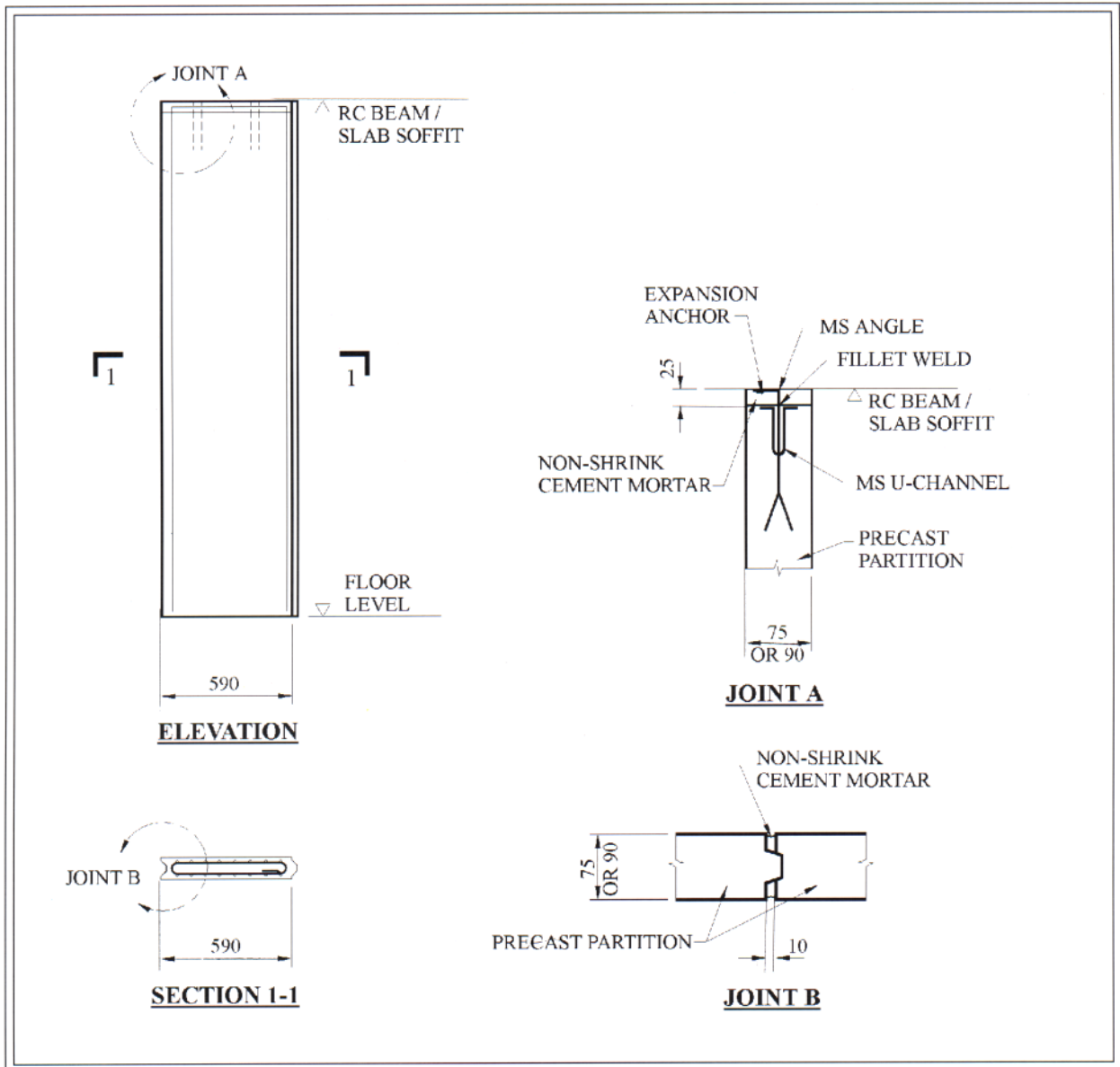
Courtesy of HDB  
Used with permission

# Gable-End Wall

# Prefab Bathroom







Courtesy of HDB  
Used with permission

# Lightweight Partition

# Precision Block & Panel

