

# Quick Guide For Natural Stones Installation

## 1) Surface preparation and conditioning



Ensure sufficient concrete curing



Check substrate surface and level

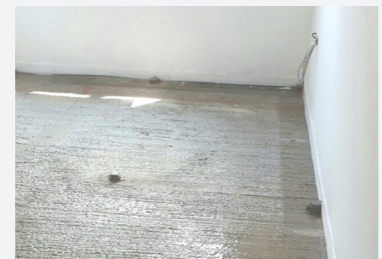


Remove surface protrusion or debris



Clean surface

## 2) Laying screed / render



Ensure surface saturated-dry



Lay screed / render



Damp cure screed



Check for hollowness

## 3) Preparation and application of adhesive



Follow manufacturers' instructions



Mix adhesive



Do not use beyond pot life



Spread and trowel adhesive in straight line

## 4) Laying of stones



Clean back face of stone



Tap stone into position



Check alignment and level



Allow stones to set

## 5) Grouting



Fill joints with grout



Clean excessive grout

## 6) Protection



Lay protection sheet



Restrict access to completed works